

## Registered Actively Seeking Work July 2013

Statistics Unit: [www.gov.je/statistics](http://www.gov.je/statistics)

### Summary

On 31 July 2013:

- on a seasonally adjusted<sup>1</sup> basis, the total number of people registered as actively seeking work (ASW) in Jersey was<sup>2</sup>:
  - 10 lower than a month earlier, in June 2013;
  - 20 lower than the average for the preceding three months;
- the non-seasonally adjusted ASW total was 1,860; this latest monthly total is:
  - 10 higher than a month earlier, in June 2013;
  - 120 higher than a year earlier (July 2012) and almost double that of four years ago (July 2009)<sup>3</sup>;
- **long-term registered ASW** (registered for more than twelve months) accounted for more than a fifth of total ASW and remained at the highest level recorded to date;
- **280 teenagers aged 16-19 years** were registered as ASW, 20 higher than a month earlier; 120 teenagers were on the Advance to Work scheme;

### Introduction

Data on people registered as actively seeking work in Jersey is compiled and administered by the Social Security Department. The Statistics Unit independently analyses this anonymised data and publishes a monthly report.

When interpreting the numbers presented, it should be kept in mind that there is no legal requirement for all unemployed residents of Jersey to register as actively seeking work (ASW) with the Social Security Department. The numbers shown constitute an informative set of indicators of the level of individuals actively seeking work in the Island at a given point in time.

The internationally comparable unemployment rate (as defined by the International Labour Organisation, ILO) is measured for Jersey through the Annual Social Survey or the Census. The ILO unemployment rate on 27 March 2011, measured by the 2011 Census, was 4.7%; this rate corresponds to 2,570 people being unemployed at that point in time.

The numbers of people registered as ASW include people who are on the Advance to Work, Advance Plus and Workwise schemes (see Notes). The ASW figure will also include individuals who are working less than the 35 hours a week required under the terms of Income support; such individuals will be working and actively seeking working simultaneously.

<sup>1</sup> Seasonal adjustment is a statistical technique which enables examination of the underlying behaviour in a series of data by removing variations associated with the time of year, e.g. Christmas, Easter, academic year.

<sup>2</sup> ASW numbers presented in this report are rounded independently to the nearest 10.

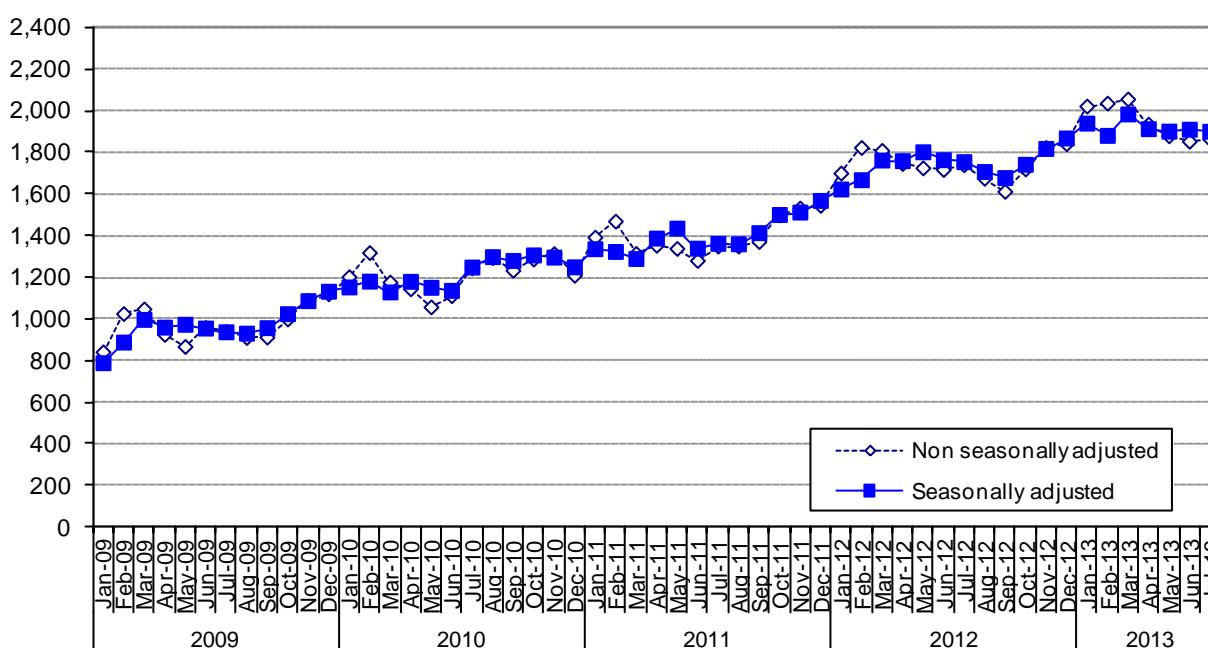
<sup>3</sup> When placing the figures contained in this report in a historical context, it should be recognised that there have been significant changes in the criteria relating to registered ASW in Jersey in recent years. In particular, the introduction of Income Support in 2008 has led to a higher proportion of individuals who were actively seeking work being included in the registered figures.

## Registered Actively Seeking Work

On 31 July 2013, 1,860 people were registered with the Social Security Department as actively seeking work (ASW). Over three-quarters (77%) of people registered as ASW on this date (1,430 individuals) were receiving Income Support<sup>4</sup>.

Figure 1 shows the total number of people registered as ASW at the end of each month since January 2009 (monthly data are shown in Appendix Table A1). The total number registered in July 2013 was 10 higher than a month earlier (June 2013), some 120 higher than a year earlier (July 2012) and almost double that of four years earlier (July 2009).

**Figure 1 – Total number of individuals registered as ASW, Jan 2009 – Jul 2013**



The seasonally adjusted series of the total registered as ASW, in which seasonal and calendar effects are removed, is also shown on Figure 1. From this perspective, the total number of people registered as ASW in Jersey in July 2013 was:

- 10 lower than a month earlier, in June 2013;
- 20 lower than the mean for the preceding three-month period, April to June 2013.

## Registered ASW by age

On 31 July 2013, almost one in three (29%) people registered as ASW were under the age of 25 years; around one in seven (15%) of the total were teenagers aged 16-19 years.

Figure 2 shows the numbers registered as ASW by age of individuals for the last five months, from March 2013 to July 2013.

In the latest month, the age groups below 25 years recorded increases of around 20 in the number of people registered as ASW compared with the previous month. In contrast, most other age groups either remained essentially unchanged (with differences of less than 10) or, in the case of those aged 45-49 years, a decrease of 20 compared with the previous month.

<sup>4</sup> The total number of adults receiving Income Support and not working will be greater than this figure, which represents the number of people receiving Income Support who were registered as ASW on 30 June 2013.

**Figure 2 – Individuals registered as ASW by age, Mar 2013 – Jul 2013**

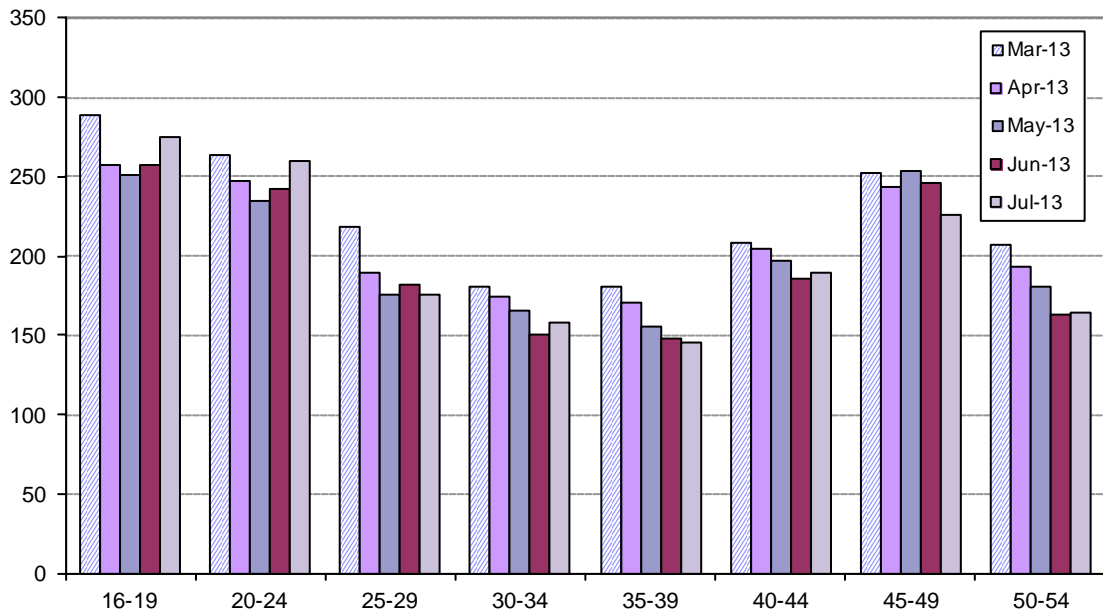
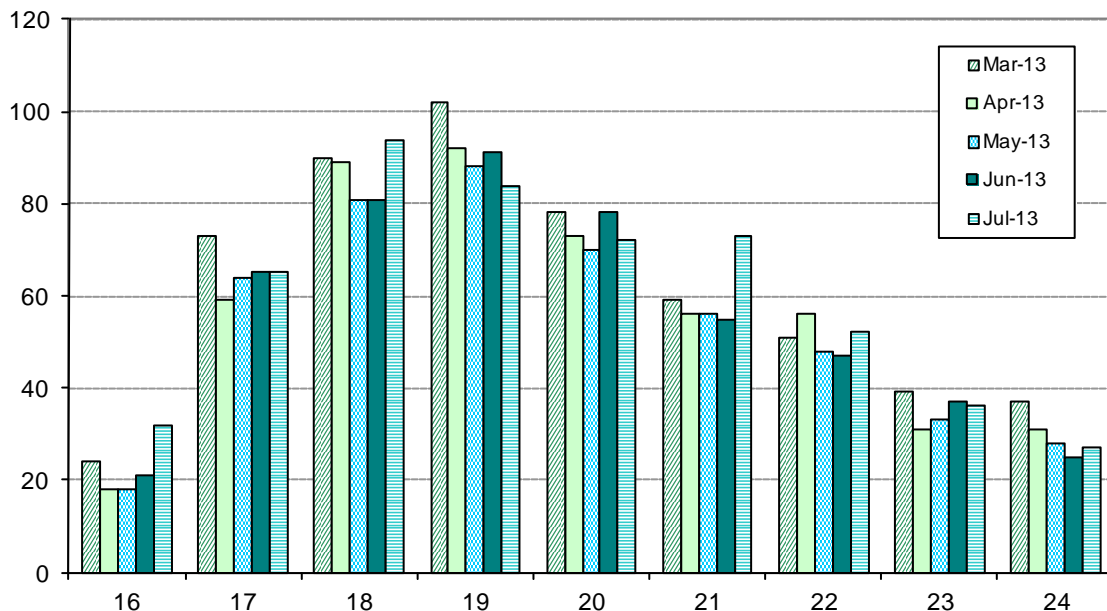


Figure 3 shows the age distribution for people under 25 years of age who were registered as ASW in the latest five months, from March 2013 to July 2013. The numbers of people aged 16 and 18 years registered as ASW increased by 10 compared with the previous month, whilst those aged 21 years increased by 20, to the highest level recorded by this age category to date.

Of the 280 teenagers (aged 16-19 years) who were registered as ASW at the end of July 2013, 120 were on the Advance to Work scheme.

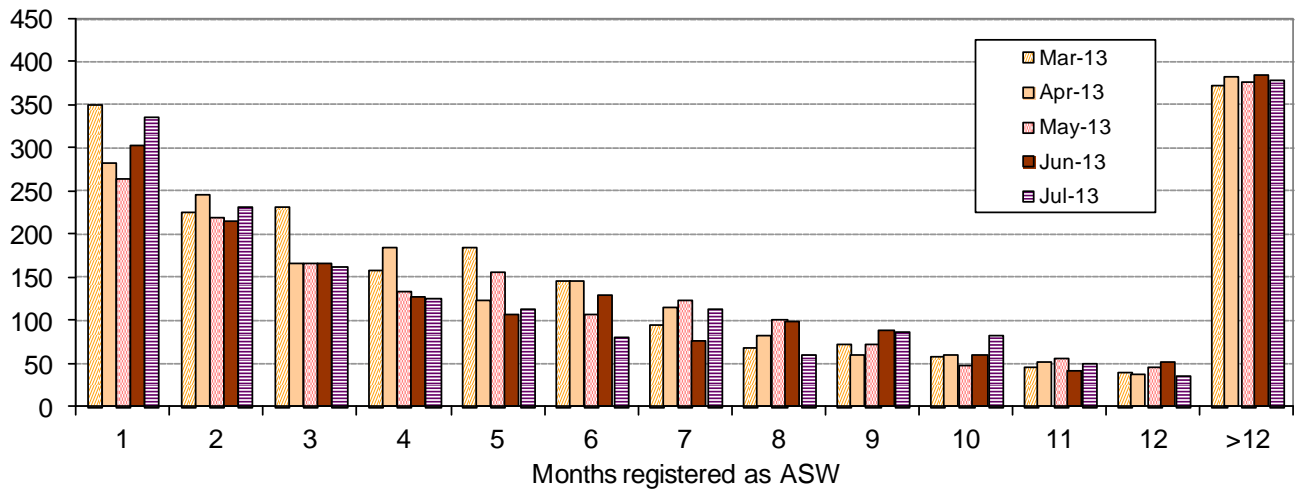
**Figure 3 – Individuals under the age of 25 registered as ASW, Mar 2013 – Jul 2013**



## Duration as ASW

Almost two-fifths (39%) of all people registered as ASW on 31 July 2013 had been registered for three months or less – see Figure 4.

**Figure 4 – Registered ASW by length of period registered (months<sup>5</sup>), Mar 2013 – Jul 2013**



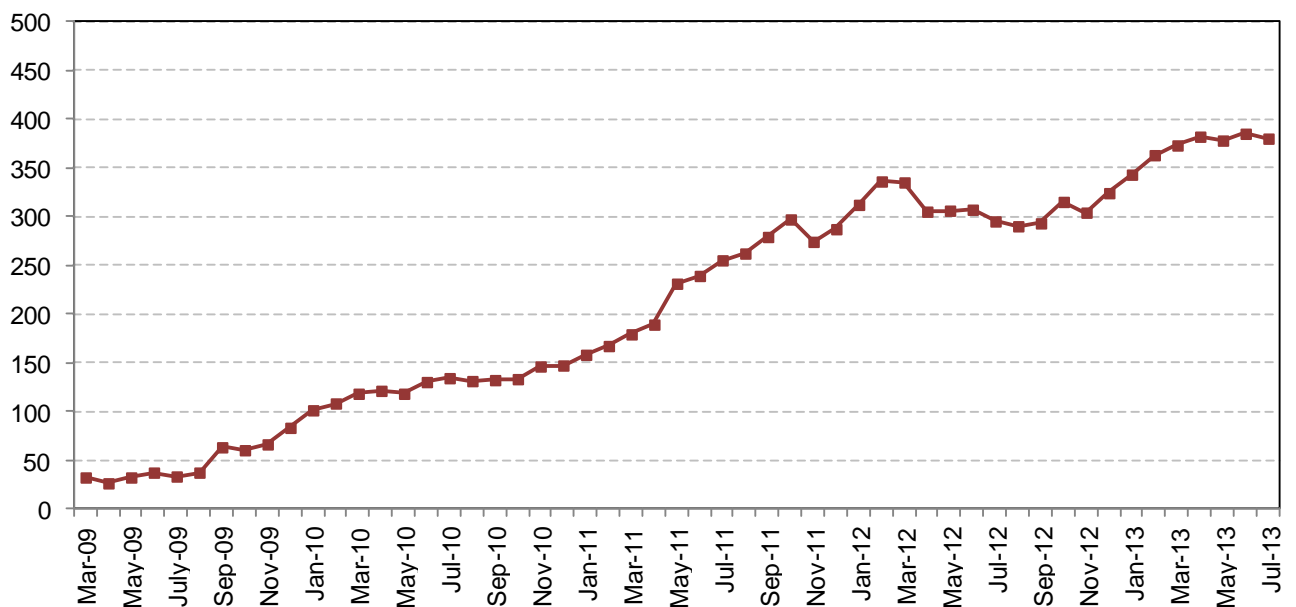
340 people had registered as ASW in the latest month, about 40 more than in June 2013. The latest number of new registrants was at the same level as in the corresponding month of the previous year, July 2012, and 120 more than in July 2011.

## Long-term ASW

On 31 July 2013, there were 380 people who had been registered as ASW for longer than twelve months, a similar level to that recorded in each of the last four months, since April 2013 (see Figure 5).

Long-term ASW accounted for more than a fifth (21%) of the latest ASW total.

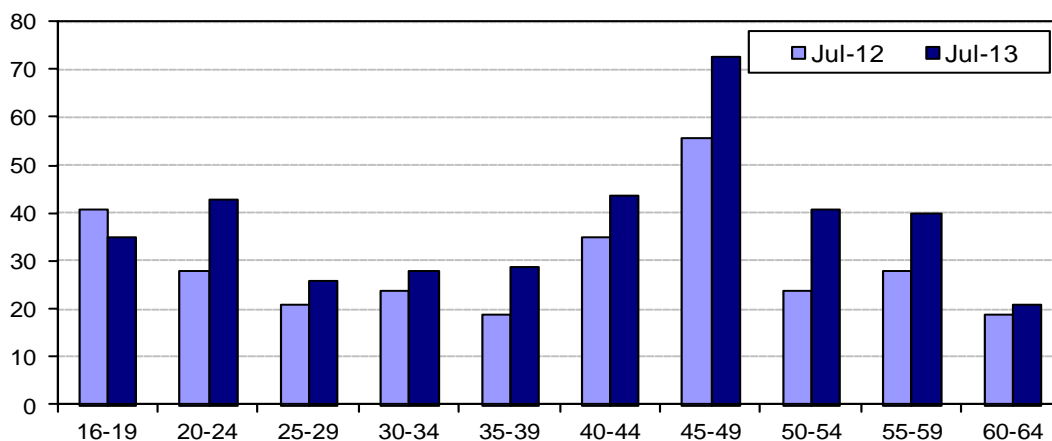
**Figure 5 – Long-term ASW, Mar 2009 – Jul 2013**



<sup>5</sup> The ASW figures from June 2012 include a revision to the calculation of the length of time for which an individual has been registered as ASW. Previously, the duration had been calculated using the number of weeks an individual had been registered as ASW, whereas from June 2012 the calculation of duration is based on calendar months.

Figure 6 shows the age distribution of the long-term ASW in July 2013.

**Figure 6 – Long-term ASW by age, Jul 2012 and Jul 2013**



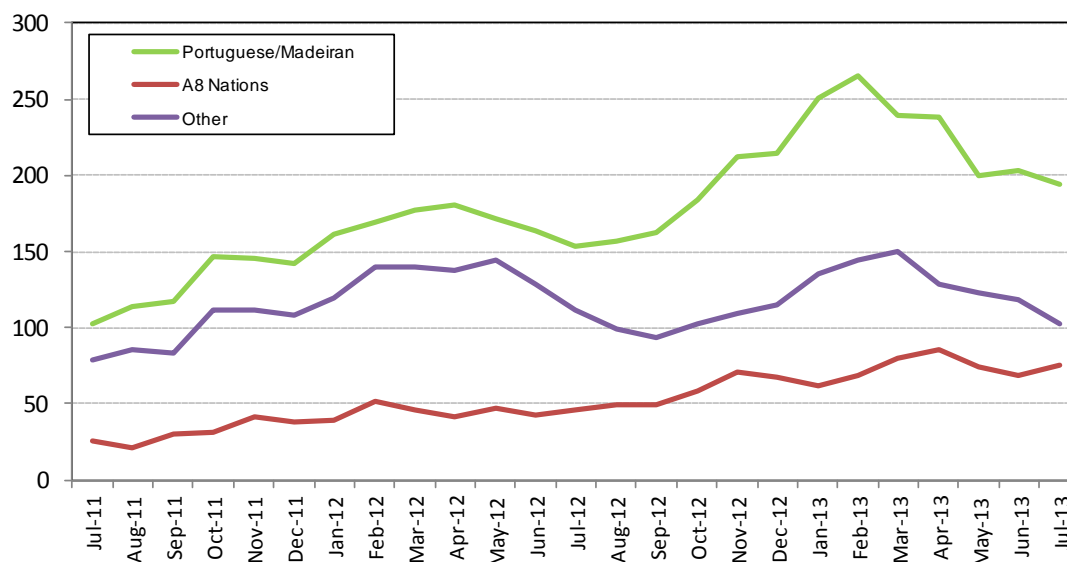
In July 2013 there were 80 people under 25 years of age who had been registered as ASW for more than a year, accounting for a fifth (21%) of the total number of long-term ASW. People aged 45 years or above accounted almost half (46%) of the total number of long-term ASW in July 2013.

### Registered ASW by Nationality

On 31 July 2013, more than four-fifths of all people registered as ASW were of British/Jersey nationality<sup>6</sup>. The proportion of the total ASW represented by such nationals has decreased slightly over the last two years, from 85% in July 2011 to 80% in July 2013.

The number of individuals registered as ASW for nationalities other than British/Jersey over the last two years is shown in Figure 7.

**Figure 7 – Individuals registered as ASW by nationality, Jul 2011 – Jul 2013**



There were 190 individuals of Portuguese/Madeiran nationality registered as ASW in July 2013. The number of such nationals registered as ASW is 10 fewer than a month earlier (June 2013), 40 greater than a year earlier (July 2012) and almost double that of two years ago (July 2011).

There were 80 individuals from the EU Accession (A8)<sup>7</sup> nations who were registered as ASW in July 2013. The number of such nationals registered as ASW is 30 greater than a year earlier (July 2012) and three times that of two years ago (July 2011).

<sup>6</sup> Nationality recorded by the Social Security Department for the purpose of registering as ASW is self-reported.

## Industry

Individuals working in some industries of the economy, notably in the Finance sector, often seek employment through private agencies and do not register with the Social Security Department. Such industries will, therefore, tend to be under-represented in the ASW numbers.

The last industry of employment was recorded for almost nine out of ten people registered as ASW in July 2013:

- around one in five were previously employed in 'Miscellaneous professional and domestic services' (21%) or in 'Retail and Wholesale, Motor repairs and sales' (20%);
- around one in seven were previously employed in 'Construction and allied trades' (14%).
- around one in ten were employed in 'Hotels, restaurants, pubs and clubs' (10%).

## Notes

People who are registered as actively seeking work receive the support of one of the government employment schemes which come under the administration of Back to Work. They are:

- Advance to Work – for jobseekers aged 16 – 19 years
- Advance Plus – for jobseekers with an industry-specific interest aged 20 – 65 years
- Workwise – for jobseekers with special employment needs
- Work Zone – for all registered jobseekers

In addition to the development and expansion of these schemes, Back to Work is responsible for:

- The Employment Grant
- A dedicated Employer Engagement team
- The Long Term Unemployment Programme
- Industry and employer specific initiatives.

The aim of Back to Work is to increase access to job opportunities for locally qualified people who are registered as actively seeking work by supporting jobseekers and building a partnership with employers to provide sustainable job opportunities.

*Statistics Unit  
23 August 2013*

---

<sup>7</sup> The eight countries which joined ("gained accession to") the European Union in May 2004 were: the Czech Republic, Estonia, Hungary, Latvia, Lithuania, Poland, Slovakia and Slovenia.

## Appendix

Table A1: Number of individuals registered as ASW, Jan 2009 – Jul 2013<sup>8</sup>

|             |     | Male | Female | Total | Seasonally adjusted total |
|-------------|-----|------|--------|-------|---------------------------|
| <b>2009</b> | Jan | 570  | 270    | 840   | 790                       |
|             | Feb | 700  | 320    | 1,020 | 890                       |
|             | Mar | 720  | 330    | 1,050 | 1,000                     |
|             | Apr | 620  | 300    | 920   | 960                       |
|             | May | 560  | 300    | 870   | 970                       |
|             | Jun | 630  | 330    | 960   | 950                       |
|             | Jul | 620  | 320    | 940   | 940                       |
|             | Aug | 580  | 320    | 910   | 930                       |
|             | Sep | 580  | 330    | 910   | 960                       |
|             | Oct | 650  | 350    | 1,000 | 1,020                     |
|             | Nov | 700  | 390    | 1,090 | 1,090                     |
|             | Dec | 700  | 420    | 1,120 | 1,130                     |
| <b>2010</b> | Jan | 770  | 440    | 1,200 | 1,150                     |
|             | Feb | 810  | 510    | 1,320 | 1,180                     |
|             | Mar | 720  | 450    | 1,170 | 1,130                     |
|             | Apr | 710  | 430    | 1,140 | 1,180                     |
|             | May | 670  | 390    | 1,060 | 1,150                     |
|             | Jun | 690  | 420    | 1,110 | 1,130                     |
|             | Jul | 760  | 490    | 1,240 | 1,250                     |
|             | Aug | 810  | 490    | 1,290 | 1,300                     |
|             | Sep | 770  | 460    | 1,230 | 1,280                     |
|             | Oct | 840  | 450    | 1,290 | 1,300                     |
|             | Nov | 870  | 440    | 1,310 | 1,290                     |
|             | Dec | 800  | 410    | 1,210 | 1,250                     |
| <b>2011</b> | Jan | 910  | 480    | 1,390 | 1,330                     |
|             | Feb | 960  | 510    | 1,470 | 1,320                     |

|             |             | Male  | Female | Total | Seasonally adjusted total |       |
|-------------|-------------|-------|--------|-------|---------------------------|-------|
|             | Mar         | 850   | 460    | 1,310 | 1,290                     |       |
|             | Apr         | 870   | 490    | 1,350 | 1,390                     |       |
|             | May         | 820   | 520    | 1,340 | 1,430                     |       |
|             | Jun         | 780   | 500    | 1,280 | 1,340                     |       |
|             | Jul         | 800   | 550    | 1,350 | 1,360                     |       |
|             | Aug         | 820   | 530    | 1,350 | 1,360                     |       |
|             | Sep         | 850   | 520    | 1,370 | 1,410                     |       |
|             | Oct         | 920   | 570    | 1,500 | 1,500                     |       |
|             | Nov         | 960   | 580    | 1,530 | 1,510                     |       |
|             | Dec         | 960   | 580    | 1,540 | 1,570                     |       |
|             | <b>2012</b> | Jan   | 1,050  | 650   | 1,700                     | 1,620 |
|             |             | Feb   | 1,130  | 690   | 1,820                     | 1,670 |
| Mar         |             | 1,100 | 700    | 1,810 | 1,760                     |       |
| Apr         |             | 1,060 | 680    | 1,740 | 1,760                     |       |
| May         |             | 1,040 | 680    | 1,720 | 1,800                     |       |
| Jun         |             | 1,020 | 700    | 1,720 | 1,760                     |       |
| Jul         |             | 1,020 | 720    | 1,740 | 1,750                     |       |
| Aug         |             | 1,020 | 650    | 1,670 | 1,710                     |       |
| Sep         |             | 970   | 650    | 1,610 | 1,680                     |       |
| Oct         |             | 1,020 | 700    | 1,720 | 1,740                     |       |
| Nov         |             | 1,090 | 730    | 1,820 | 1,820                     |       |
| Dec         |             | 1,100 | 740    | 1,840 | 1,870                     |       |
| <b>2013</b> | Jan         | 1,210 | 810    | 2,020 | 1,940                     |       |
|             | Feb         | 1,210 | 820    | 2,030 | 1,880                     |       |
|             | Mar         | 1,230 | 820    | 2,050 | 1,980                     |       |
|             | Apr         | 1,140 | 800    | 1,930 | 1,910                     |       |
|             | May         | 1,080 | 800    | 1,880 | 1,930                     |       |
|             | Jun         | 1,040 | 810    | 1,850 | 1,910                     |       |
|             | Jul         | 1,030 | 840    | 1,860 | 1,900                     |       |

<sup>8</sup> Numbers are rounded independently to the nearest 10; hence components may not sum to totals.